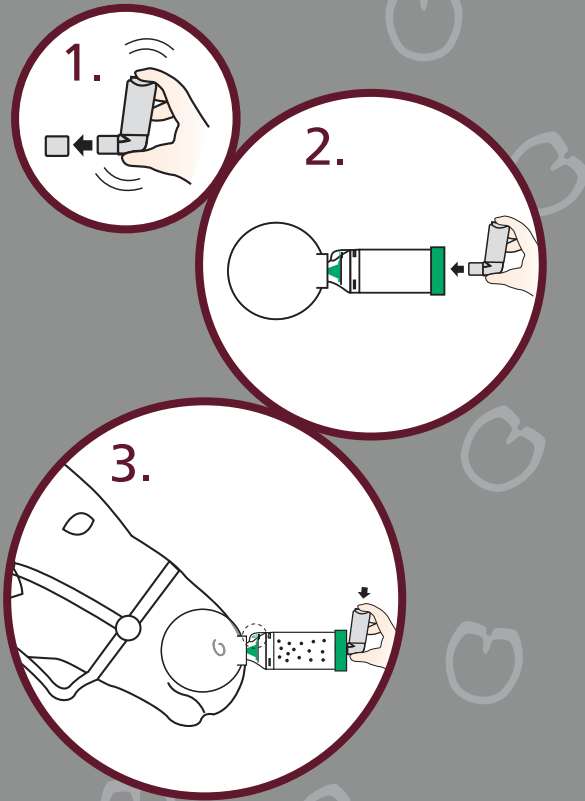


Instructions for Use

1. Remove cap and shake inhaler
2. Insert inhaler into back of chamber and gently apply the mask over one nostril. Do NOT cover the other nostril as this will make it harder for your horse to breathe normally
3. Press the inhaler to release the medication when the **Flow-Vu*** Inhalation Indicator is moving toward your horse. Hold the mask in place for 3–5 breaths. Only administer one puff at a time. Wait 30 seconds between puffs



Highly Efficient

Since 1990, inhaled aerosol medications have been used to treat horses with respiratory disease. However, the **AeroHippus*** Chamber was designed to simplify the process while providing highly efficient delivery.¹

High deposition may result in fewer doses required for medication to be effective with potential cost-savings.

"The **AeroHippus*** Chamber worked wonderfully. He received medication for three weeks and became quite used to the mask. I think he figured out that it made him feel better. Hopefully, I won't have to use it very often, but it is nice to have on hand and it's portable, so I can carry it with me. I am thoroughly pleased with your product."

Marilyn, Horse Owner

Distributed by:



154 Worcester Road, Malvern,
Worcestershire WR141AA,
United Kingdom

t: +44 (0) 330 053 5056
e: enquiries@breatheazy.co.uk
w: www.breatheazy.co.uk

725 Third Street, London,
Ontario, Canada, N5V 5G4
+1-519-455-7060
F: +1-519-455-7858
1-800-465-3296



Trudell Medical International[†]
www.aerohippus.co.uk

Does your horse suffer from respiratory symptoms?



1 Hoffman et al. Tufts University School of Veterinary Medicine. AeroHippus[®] EAC Radiolabelled Study with OVAR Beclomethasone Dipropionate MDI. 101462-001 Rev. C *trade-marks and registered trade-marks of Trudell Medical International. © TMI 2015. All rights reserved.



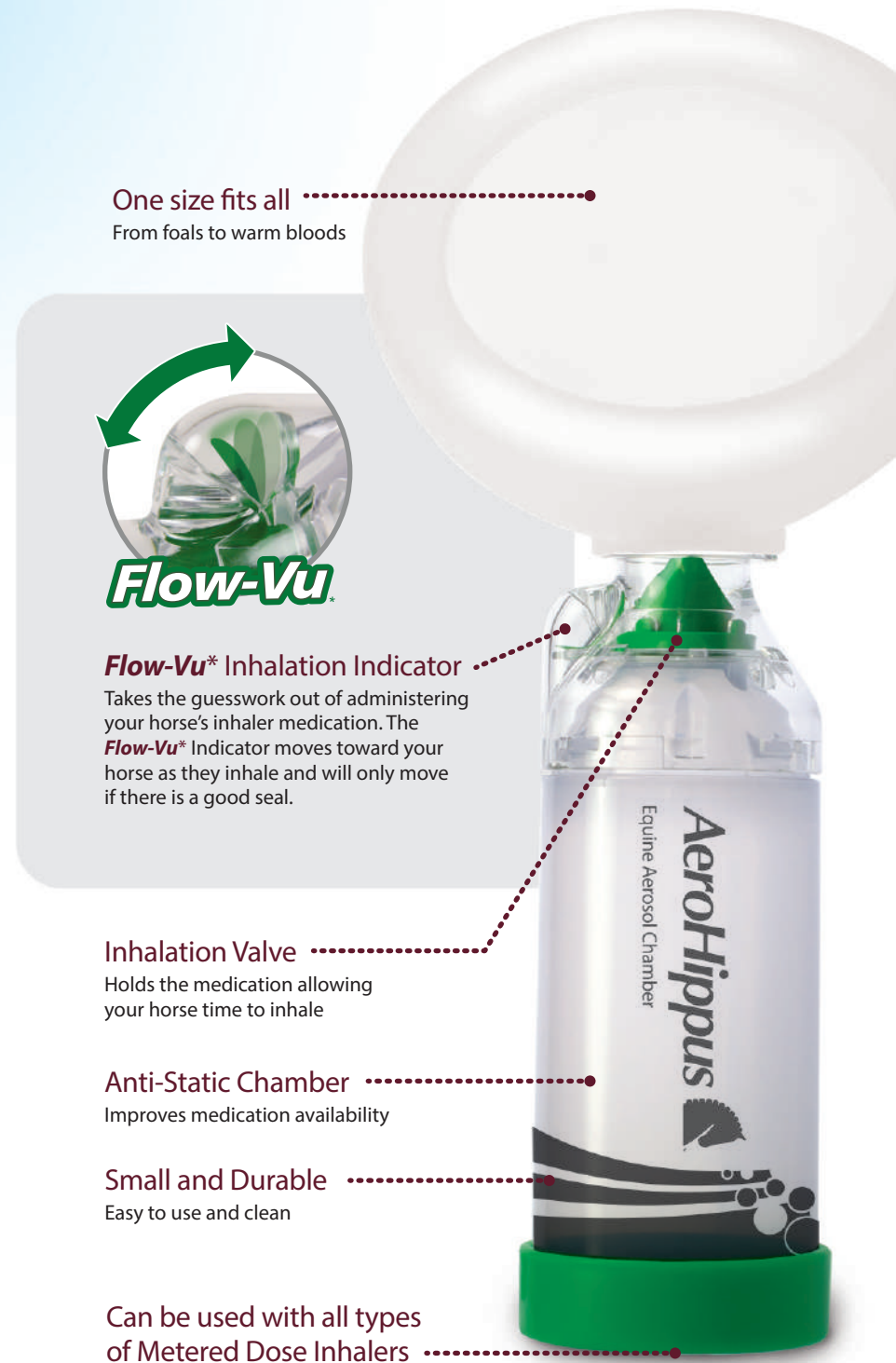
Helping horses around the world breathe easy!

The **AeroHippus*** Equine Aerosol Chamber is designed to deliver metered dose inhaler (puffer) medication to horses with respiratory diseases such as Inflammatory Airway Disease or Recurrent Airway Obstruction.


Treatment

When the **AeroHippus*** Chamber is attached to the puffer it allows your horse to breathe normally and inhale the aerosol medication so it goes deep into your horse's lungs where it is needed.

AeroHippus 
Equine Aerosol Chamber



One size fits all
From foals to warm bloods


Flow-Vu

Flow-Vu* Inhalation Indicator
Takes the guesswork out of administering your horse's inhaler medication. The **Flow-Vu*** Indicator moves toward your horse as they inhale and will only move if there is a good seal.

Inhalation Valve
Holds the medication allowing your horse time to inhale

Anti-Static Chamber
Improves medication availability

Small and Durable
Easy to use and clean

Can be used with all types of Metered Dose Inhalers